

GEOLOGIC MAP OF INDEPENDENCE QUADRANGLE, JACKSON COUNTY, MISSOURI

BY
ELDON J. PARIZEK
1968

EXPLANATION

QUATERNARY SYSTEM

PLEISTOCENE SERIES

Qal Alluvial deposits: silt, sand, and gravel

PENNSYLVANIAN SYSTEM

MISSOURIAN SERIES

a **Pkc(z)** KANSAS CITY GROUP ZARAH SUBGROUP: Lana and Wyandotte Formations. Base of Argentine Limestone Member, Wyandotte Formation shown by line.

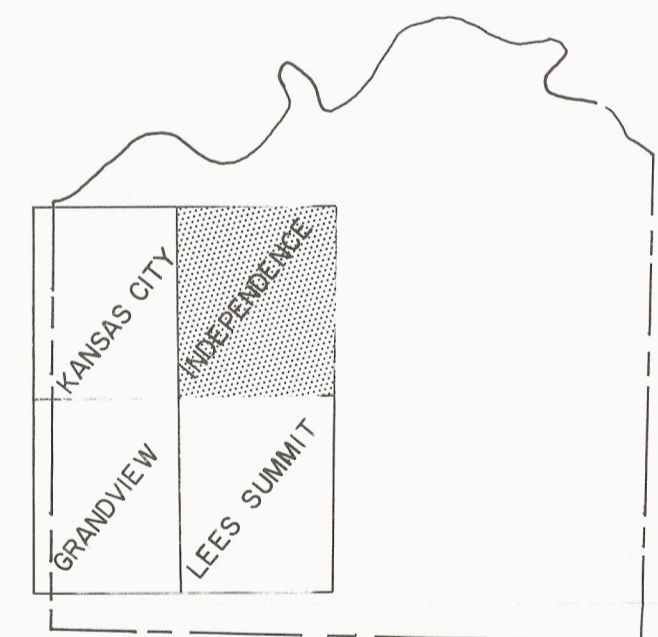
cc **Pkc(l)** KANSAS CITY GROUP LINN SUBGROUP: Cherryvale, Drum, Chanute, and Iola Formations. Base of Cement City Limestone Member, Drum Formation, shown by line.

Pkc(b) **bf** KANSAS CITY GROUP BRONSON SUBGROUP: Hertha, Ladore, Swope, Galesburg, and Dennis Formations. Top of Bethany Falls Limestone Member, Swope Formation, shown by line.

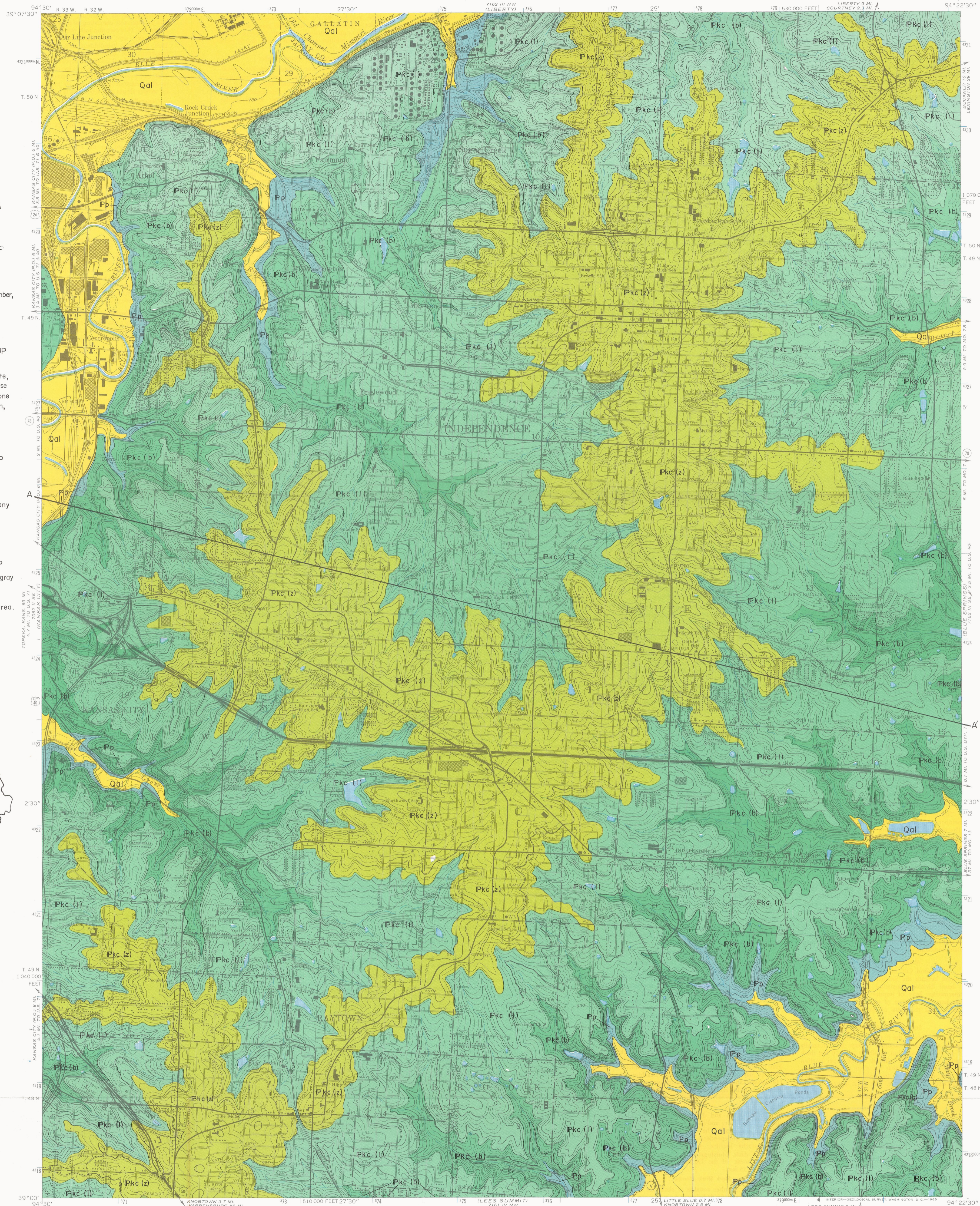
Pp PLEASANTON GROUP Consists mostly of silty gray shale with few named subdivisions; base not exposed in quadrangle area.



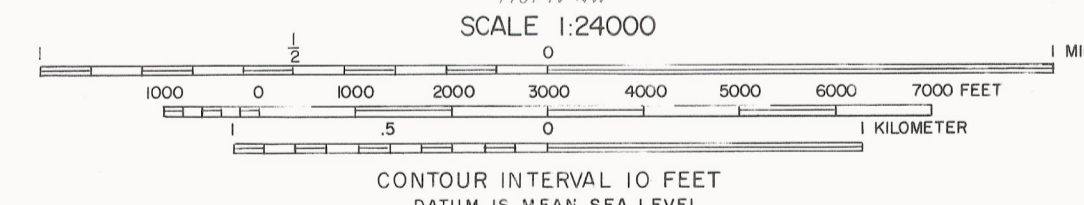
INDEX MAP OF MISSOURI



INDEX MAP OF JACKSON COUNTY



BASE MAP BY U.S. GEOLOGICAL SURVEY 1964



80°
MAGNETIC NORTH
APPROXIMATE MEAN DECLINATION 1964

TOPOGRAPHIC QUADRANGLE INDEPENDENCE, MISSOURI

GENERALIZED CROSS-SECTION A-A'
VERTICAL EXAGGERATION 10:1

