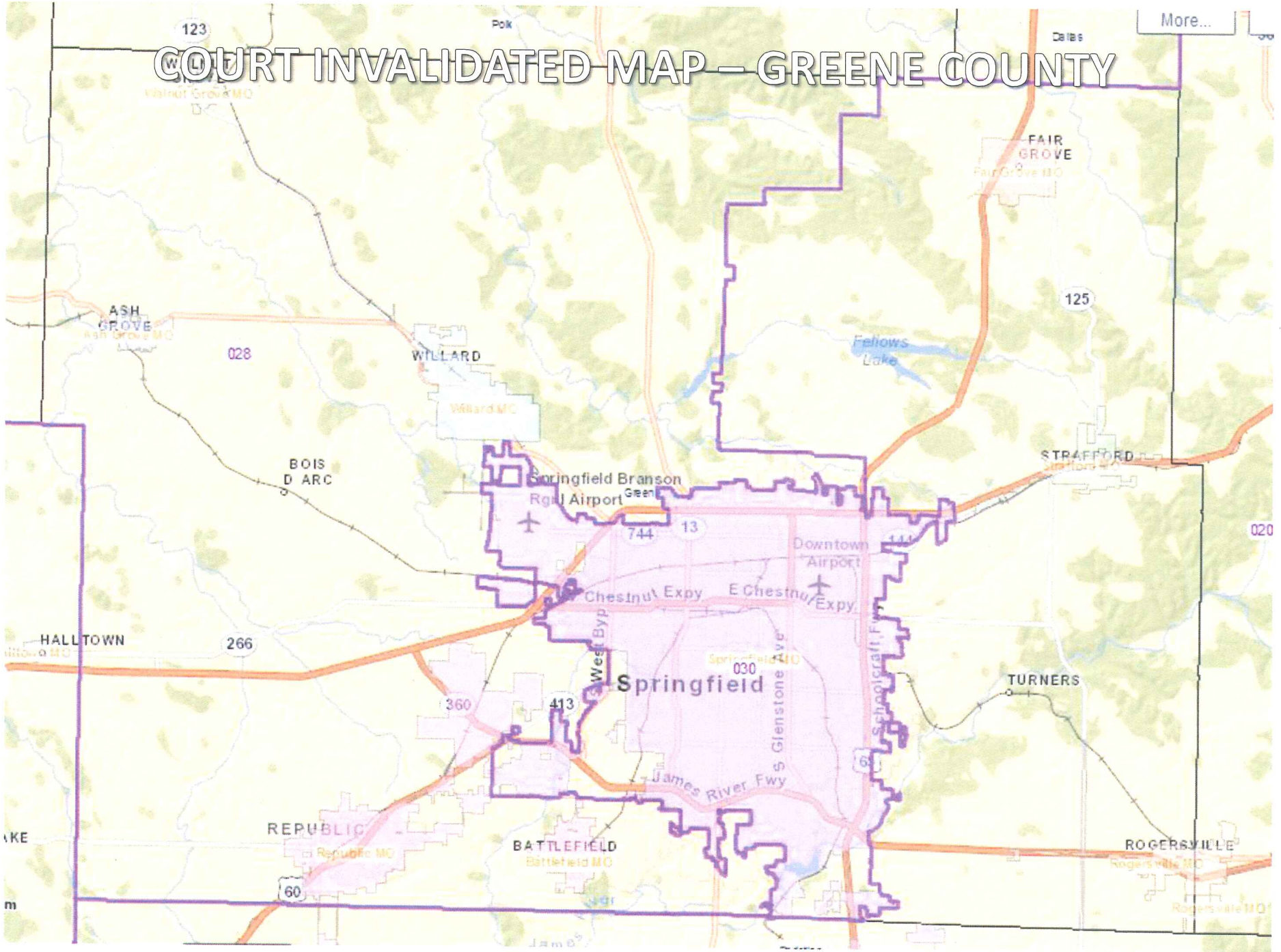


2012 Senate Apportionment Commission
Kansas City Public Hearing
February 20, 2012

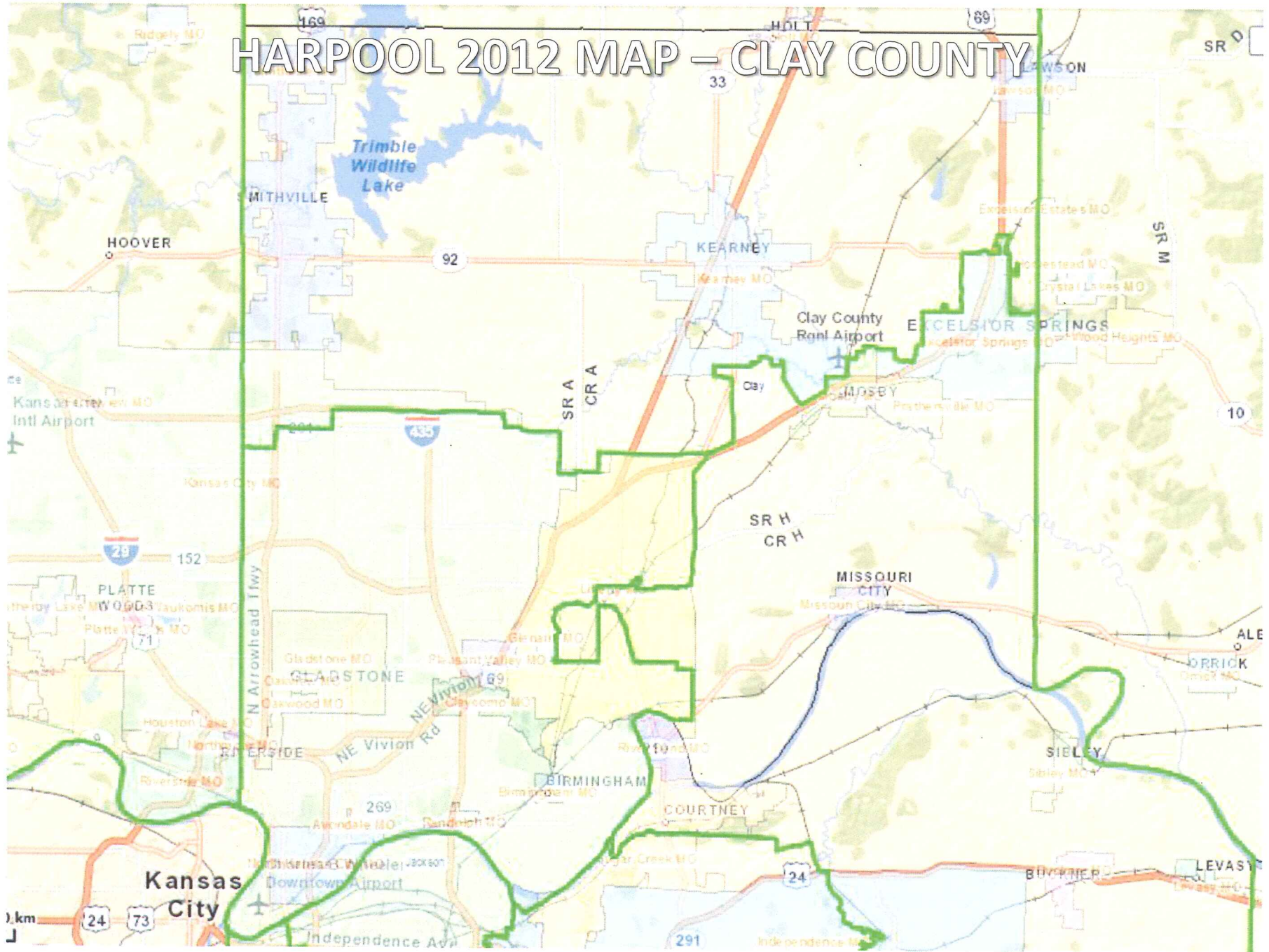
Clay County Republican
Central Committee
Map Suggestion

Presented by:
Ben Wierzbicki
Josh Hurlbert

COURT INVALIDATED MAP - GREENE COUNTY



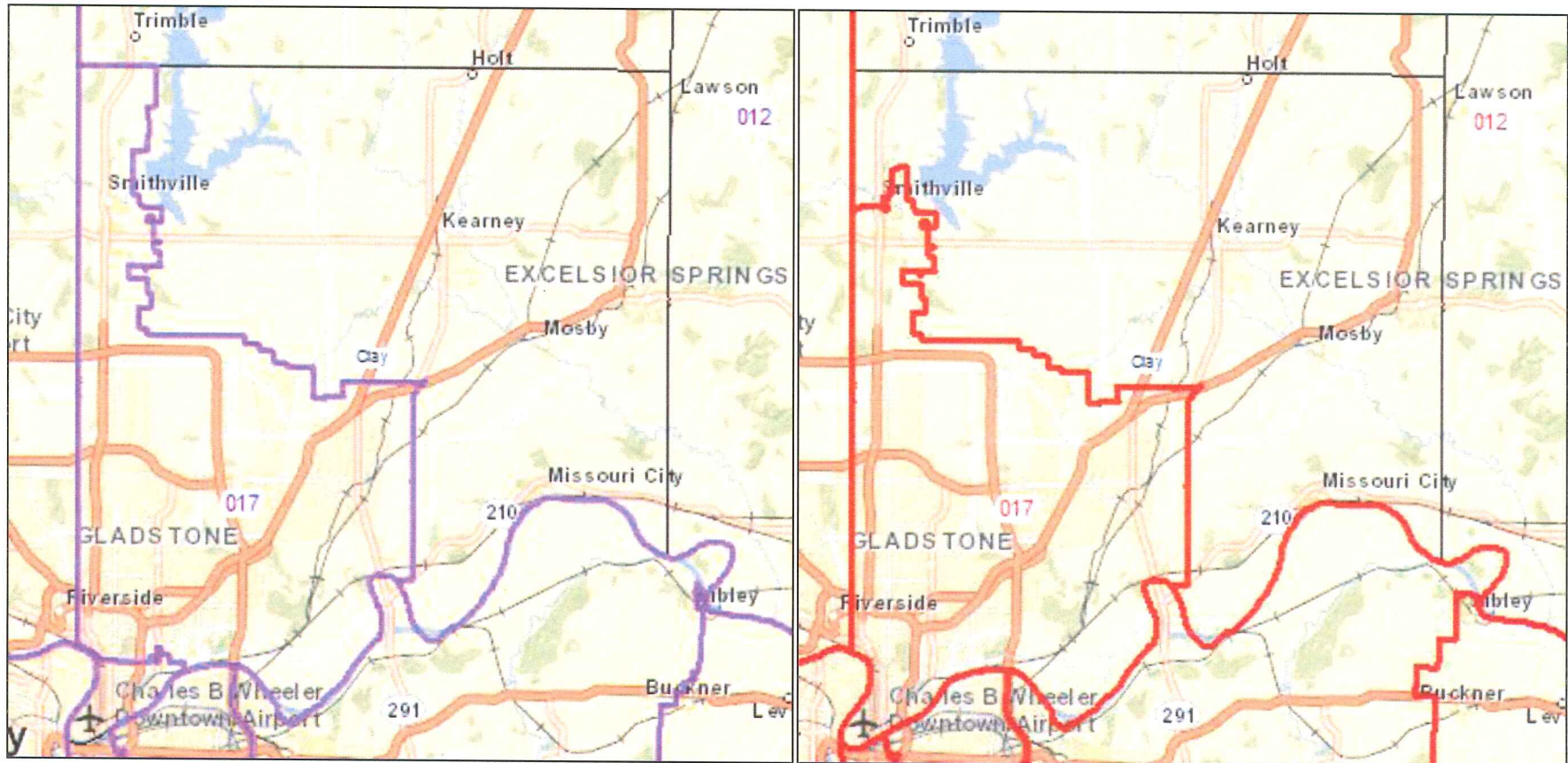
HARPOOL 2012 MAP - CLAY COUNTY

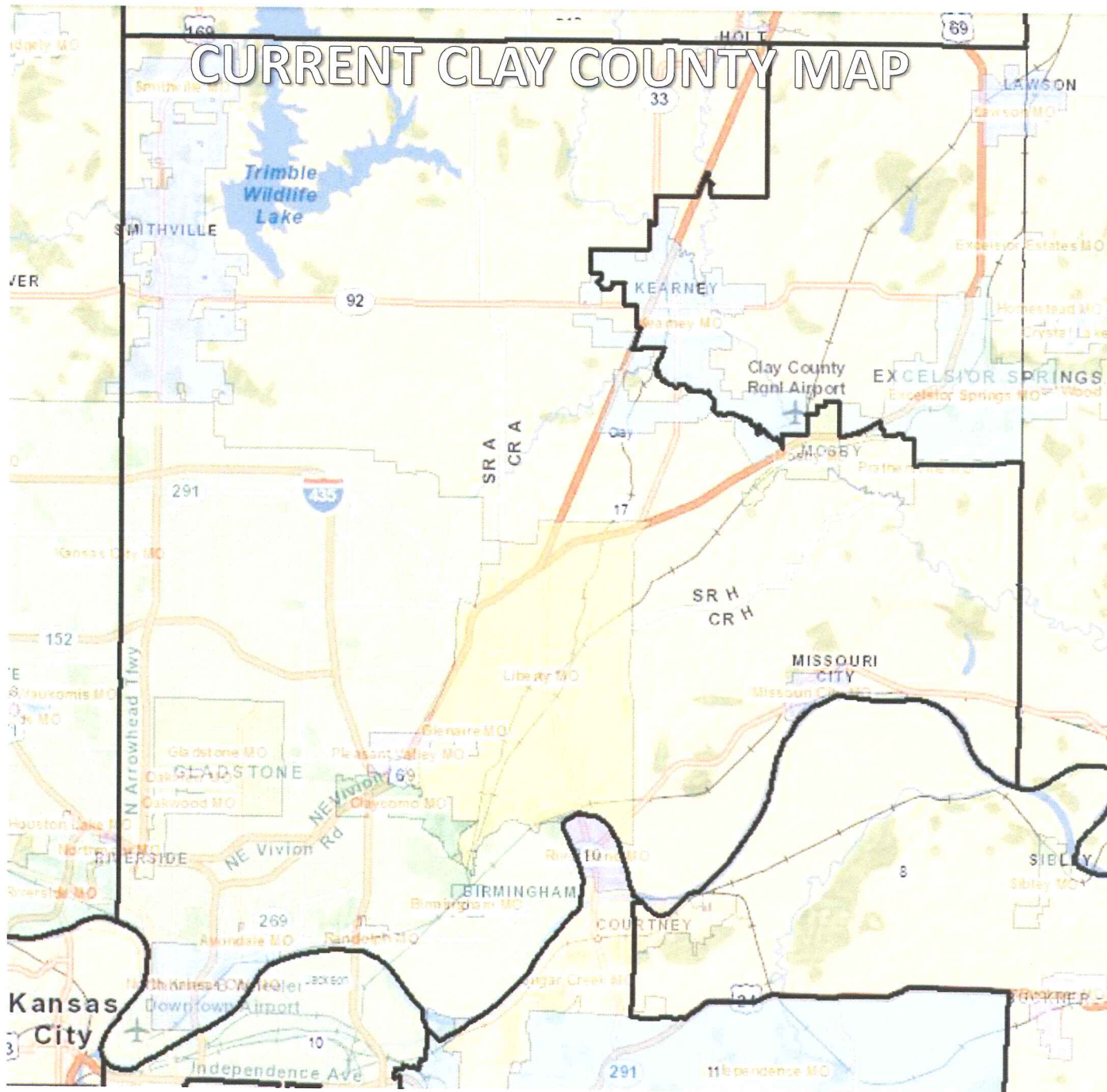


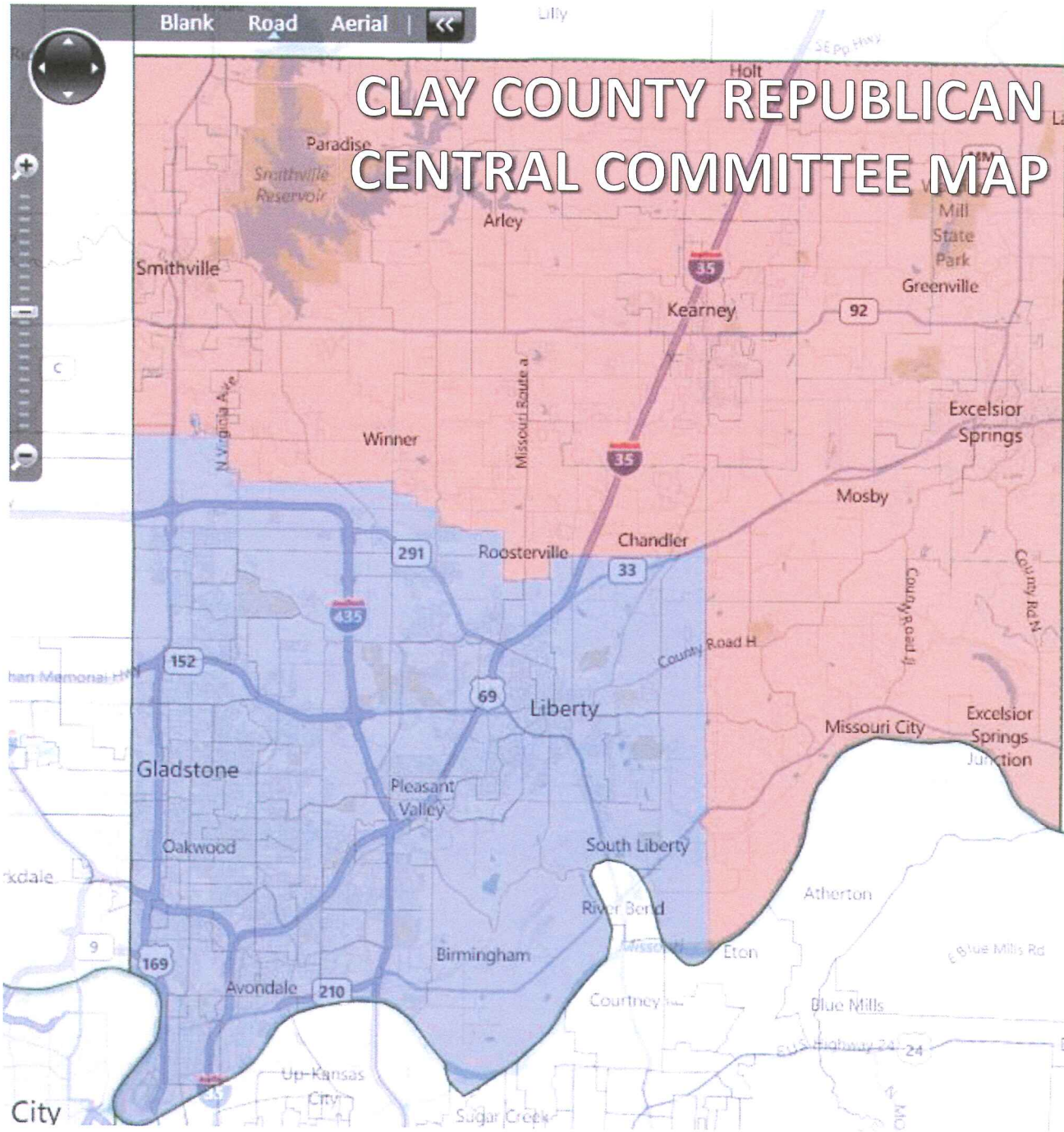
APPELLATE COURT COMMISSION MAP – CLAY COUNTY

1ST MAP

2ND MAP







SD 17			SD 21		
Total Population			Total Population		
All	Pop	%	All	Pop	%
Tot	179,118		Tot	42,821	
Wh	146,498(81.8)		Wh	40,113(93.7)	
Bl	10,747 (6.0)		Bl	473 (1.1)	
Hisp	11,963 (6.7)		Hisp	1,138 (2.7)	
Asn	4,796 (2.7)		Asn	256 (0.6)	
Nat	803 (0.4)		Nat	212 (0.5)	
Oth	4,311 (2.4)		Oth	629 (1.5)	
Voting Age Pop			Voting Age Pop		
18+	Pop	%	18+	Pop	%
Tot	133,267		Tot	31,405	
Wh	112,996(84.8)		Wh	29,796(94.9)	
Bl	7,142 (5.4)		Bl	327 (1.0)	
Hisp	7,209 (5.4)		Hisp	654 (2.1)	
Asn	3,351 (2.5)		Asn	174 (0.6)	
Nat	644 (0.5)		Nat	153 (0.5)	
Oth	1,925 (1.4)		Oth	301 (1.0)	
President 2008			President 2008		
Votes		%	Votes		%
Oba	44,159(50.9)		Oba	9,602(42.2)	
McC	41,626(47.9)		McC	12,890(56.6)	
Other	1,036 (1.2)		Other	287 (1.3)	
Avg			Avg		
Votes		%	Votes		%
Dem	39,717(52.8)		Dem	9,069(45.0)	
Rep	35,538(47.2)		Rep	11,064(55.0)	

DEVIATION – 0.98%